

**QUARTERLY PROJECT FUNDING PLANS/
MAJOR STATE HIGHWAY PROJECTS**

October 2, 2008

- ▶ 1106: I-680 Auxiliary Lanes Project – Segments 1 & 3 (Final Report)
- ▶ 1405: SR 4 (E) Widening: Railroad Avenue to Loveridge Road
- ▶ 1406: SR 4 (E) Widening: Loveridge Road to Somersville Road
- ▶ 1407 / 3001: SR 4 (E) Widening: Somersville Road to SR 160
- ▶ 1698 / 1001: Caldecott Tunnel Fourth Bore
- ▶ 7002: I-80 / San Pablo Dam Road Interchange Improvements
- ▶ 7003: I-80/Central Avenue Interchange Improvements
- ▶ 8003: I-680/Norris Canyon Bus / Carpool On and Off-Ramps

**I-680 AUXILIARY LANES PROJECT - Segments 1 & 3
PROJECT NO. 1106**

I. Project Schedule

Current Project Phase: Construction/Landscaping complete. This will be the final Quarterly Funding Report for this project.

Phase Name	2000	2001	2002	2003	2004	2005	2006	2007	2008
Project Approval/ Environmental Document	■								
Final Design			■						
Right of Way & Utilities						■			
Construction							■		
Landscaping								■	

■ Completed ▨ In Progress

II. Current Funding Plan (\$ in Millions) - Segments 1 &3

Changes from Last Quarterly Report: None.

Fund Source	Project Approval/ Environmental Document	Design	Right of Way & Utilities	Construction	Construction Management & Engineering	Total	Note
STP				5.5		5.5	
STIP-RIP			0.05	7.6	0.9	8.6	
SCCR	0.9	0.7				1.6	
TVTDF	0.3	2.20	0.22	4.7	2.2	9.6	
Total Project Cost	1.2	2.9	0.27	17.8	3.1	\$25.3	

Legend:

STP: Surface Transportation Program (Federal)

STIP – RIP: State Transportation Improvement Program/Regional Improvement Program

SCCR: Southern Contra Costa Regional

TVTDF: Tri-Valley Transportation Development Fee

III. Status of Major Consultant/Agency Contracts

Changes from Last Quarterly Report: None.

Contract No.	Amend No.	Open/ Closed	Agency/Consultant	Description	Current Contract Not To Exceed Amount	Current Authorized Amount	Contingency or Uncommitted Work Order Funds
126	6	Closed	Washington Group International	Project Approval/ Environmental Document	\$ 968,928	\$ 968,928	\$ -
155	7	Open	DMJM + Harris	Final Design	\$ 2,581,766	\$ 2,581,766	\$ -
199	2	Open	S & C Engineering	Construction Management	\$ 1,285,000	\$ 1,285,000	\$ -
200	2	Open	DMJM + Harris	Design Support During Construction	\$ 260,000	\$ 260,000	\$ -
231	0	Open	Watkins & Bortolussi	Landscape Construction	\$ 1,203,398	\$ 1,203,398	\$ -

**SR 4 (E) WIDENING: RAILROAD AVENUE TO LOVERIDGE ROAD
PROJECT NO. 1405**

I. Project Schedule

Current Project Phase: Preparation of the Plans, Specifications and Estimates (PS&E) for the Mainline landscaping design is nearly complete. Landscape construction is anticipated to begin in spring 2009.

Phase Name	1999	2000	2001	2002	2003	2004	2005	2006	2007	2008	2009
Project Approval/ Environmental Document	■										
Final Design		■									
Right of Way & Utilities			■								
Construction				■							
Landscaping									■		

■ Completed ▨ In Progress

II. Current Funding Plan (\$ in Millions)

Changes from Last Quarterly Report: None

Fund Source	Project Approval/ Environmental Document	Design	Right of Way & Utilities	Construction	Construction Management & Engineering	Total	Note
Measure C	1.2	5.6	19.5	2.8	6	35.1	¹
Federal Earmark				8		8	
STIP-RIP			3.2	19.2	3.5	25.9	
STIP-IIP				5		5	
TCRP			18.5	6.5		25	
ECCRFFA				0.6	1.4	2	
Total Project Cost	1.2	5.6	41.2	42.1	10.9	\$101	

Legend:

STIP – RIP: State Transportation Improvement Program/Regional Improvement Program
 STIP – IIP: State Transportation Improvement Program/Inter-regional Improvement Program
 TCRP: Traffic Congestion Relief Program
 ECCRFFA: East Contra Costa Regional Fee and Financing Authority

Fund Plan Notes:

- \$33.1 M is currently programmed in the Measure C 2005 Strategic Plan. The proposed 2008 Measure C Strategic Plan will fund the \$2 M shortfall to complete the remaining project activities including mainline landscaping and right of way closeout.

III. Status of Major Consultant/Agency Contracts

Changes from Last Quarterly Report: None.

Contract No.	Amend No.	Open/Closed	Agency/Consultant	Description	Current Contract Not To Exceed Amount	Current Authorized Amount	Remaining Contingency or Uncommitted Work Order Funds
113	1	Closed	Mark Thomas & Co.	Project Approval/ Environmental Document	\$ 983,209	\$ 983,209	\$ -
124	7	Open	Contra Costa County	Right of Way Acquisition Services	\$ 4,960,500	\$ 4,960,500	\$ -
128	9	Open	Mark Thomas & Co.	Final Design	\$ 5,178,120	\$ 5,141,120	\$ 37,000
140	4	Open	Jacobs Civil Inc.	Construction Management	\$ 5,865,000	\$ 5,463,594	\$ 401,406
143	4	Open	Mark Thomas & Co.	Design Support During Construction	\$ 660,000	\$ 660,000	\$ -
201	0	Closed	American Civil Constructors	Landscape Construction	\$ 489,139	\$ 489,139	\$ -

**SR 4 (E) WIDENING: LOVERIDGE ROAD TO SOMERSVILLE ROAD
PROJECT NO. 1406**

I. Project Schedule

Current Project Phase: Project is in the final stages of design. Final Plans, Specifications and Estimates (PS&E) are scheduled for submittal to Caltrans Headquarters by the end of September. The plans have been modified to incorporate a wider median for future mass transit and the cost estimate is currently being updated to reflect these bid items. The right of way acquisition schedule has been reviewed with Caltrans who is performing these services for this project. Right of way acquisition is the critical path since new utility easements are required for major PG&E facilities that are to be relocated this winter/spring. New provisions of SB 1210, right of way acquisition are already affecting the construction schedule.

Construction of a new pump station is complete. Major PG&E facility relocations are scheduled to occur in late 2008/early 2009 and the mainline construction package will follow in 2009.

Phase Name	2001	2002	2003	2004	2005	2006	2007	2008	2009	2010	2011	2012
Project Approval/ Environmental Document	Completed											
Final Design				Completed				In Progress				
Right of Way & Utilities					Completed			In Progress				
Construction Pump Plant							Completed					
Construction Mainline									In Progress			

 Completed
  In Progress

II. Current Funding Plan (\$ in Millions)

Changes from Last Quarterly Report: None. An update to the cost estimate, including items added for eBART, will be completed and reviewed with BART staff by the end of this year. Costs for these items are anticipated to be funded from RM1/RM2 funds.

Fund Source	Project Approval/ Environmental Document	Design	Right of Way & Utilities	Construction	Construction Management & Engineering	Total	Note
Measure C	4.0	8.0	0.2	18.7	7.3	38.2	
Federal Earmark			0.7	28.3		29.0	
STIP-RIP			8.0	30.0	2.0	40.0	
STIP-IIP			3.0			3.0	
TCRP			14.0			14.0	
Regional Measure 2		2.4				2.4	
BART (RM1/RM2)		0.8	3.1	10.7	1.2	15.8	1,2
Total Project Cost	4.0	11.2	29.0	87.7	10.5	\$142.4	³

Legend:

STIP – RIP: State Transportation Improvement Program/Regional Improvement Program
 STIP – IIP: State Transportation Improvement Program/Inter-regional Improvement Program
 TCRP: Traffic Congestion Relief Program
 RM1/RM2: Regional Measure 1 and 2

Fund Plan Notes:

1. Approval of \$800,000 BART RM1/RM2 funds for Design was received in January 2008 from MTC.
2. Additional funding to provide the wider median is shown to come from the RM1/RM2 funds identified for the eBART extension. Remaining funds from the original \$2.4 M RM2 allocation were approved by MTC for use on the redesign work due to providing the wider median.
3. The Project Approval/Environmental Document (PA/ED) covers the entire SR-4 (e) corridor from Loveridge Road to SR-160 (projects 1406 and 1407).

III. Status of Major Consultant/Agency Contracts

Changes from Last Quarterly Report: Changes from the last quarterly report are highlighted in the table below. Amendment No. 2 to Contract 206 extended the contract term and increased the authorized amount by \$18,600 to include additional design services for the UPRR Team Track Facility. An Extra Work Authorization was executed for Contract 197 for additional construction management services on the Pump Station construction contract.

Contract No.	Amend No.	Open/Closed	Agency/Consultant	Description	Current Contract Not To Exceed Amount	Current Authorized Amount	Remaining Contingency or Uncommitted Work Order Funds
136	8	Open	Parsons	Project Approval/ Environmental Document	\$ 4,000,161	\$ 3,980,161	\$ 20,000
179	3	Open	URS	Final Design	\$ 8,884,914	\$ 8,613,505	\$ 271,409
181	4	Open	Contra Costa County	Acquisition Services	\$ 415,000	\$ 415,000	\$ -
197	3	Open	PB Americas	Construction Management	\$ 486,200	\$ 486,200	\$ -
206	2	Open	TranSystems	Design - Team Track Facility	\$ 122,600	\$ 122,600	\$ -
234	1	Open	URS	During Construction	\$ 50,000	\$ 50,000	\$ -

**SR 4 (E) WIDENING: SOMERSVILLE ROAD TO SR 160
PROJECT NO. 1407/3001**

I. Project Schedule

Current Project Phase: Final design and right of way acquisition.

Phase Name	2001-2005	2006	2007	2008	2009	2010	2011	2012	2013	2014	2015
Project Approval/ Environmental Document	■										
Final Design		■	■	■	■	■					
Right of Way & Utilities		■	■	■	■	■					
Construction							■	■	■	■	■

Completed
 In Progress

II. Current Funding Plan (\$ in Millions)

Changes from Last Quarterly Report: Changes from the last report are highlighted in the table below. The distribution of Measure J and BART funds for right of way, construction and construction management were updated, although the totals for each fund source did not change.

Fund Source	Project Approval/ Environmental Document	Design	Right of Way & Utilities	Construction	Construction Management & Engineering	Total	Note
Measure C		14.6	0.8			15.4	
Measure J		15.4	3.8	80.5	32.7	132.4	
CMIA				65.0	20.0	85.0	
STIP-RIP			10.0	10.6		20.6	
Federal Earmark				1.6		1.6	
ECCRFFA				80.0		80.0	
BART (RM1/RM2)			37.0	73.0		110.0	
Sub-Total SR4 Widening:						\$445.0	
Measure J					2.9	2.9	
STIP-RIP				15.0		15.0	
STIP (City)				3.8	0.6	4.4	
Shortfall				32.4	4.6	37.0	²
Sub-Total Interchange Modification Construction:						\$59.3	
BART RM2		1.5				1.5	³
Sub-Total eBART Median Structure Design:						\$1.5	
Total Project Cost	0.0	31.5	51.6	361.9	60.8	\$505.8	¹

Legend:

CMIA: Corridor Mobility Improvement Account
STIP – RIP: State Transportation Improvement Program/Regional Improvement Program
ECCRFFA: East Contra Costa Regional Fee and Financing Authority
RM1/RM2: Regional Measure 1 and 2

Fund Plan Notes:

1. Funding for Project PA/ED is included in the SR-4 Loveridge to Somersville Project Funding Plan (Project 1406). The PA/ED covers the entire SR-4 (e) corridor from Loveridge Road to SR-160 (projects 1406 and 1407).
2. The interchange modifications at the A Street and Hillcrest Avenue Interchanges, not included under the freeway widening project, have been separated out in the STIP. As previously reported, an estimated project shortfall of \$37 M is predicted, which may result in a delay in construction of some non-freeway improvements at the interchanges.

(Section II continued on the next page)

Section II Continued:

3. At the request of BART, \$1.5 M in RM-2 funds have been added to the project to cover final design of the eBART structures in the median by the Authority’s consultant team.

III. Status of Major Consultant/Agency Contracts

Changes from Last Quarterly Report: None.

Contract No.	Amend No.	Open/Closed	Agency/Consultant	Description	Current Contract Not To Exceed Amount	Current Authorized Amount	Remaining Contingency or Uncommitted Work Order Funds
183	-	Closed	Mark Thomas & Co.	Strategic Planning Study	\$ 78,432	\$ 78,432	\$ -
202	2	Open	Mark Thomas & Co.	Final Design	\$ 6,461,000	\$ 6,461,000	\$ -
203	2	Open	BFK Engineers	Final Design	\$ 6,291,000	\$ 6,291,000	\$ -
204	2	Open	TY Lin International	Final Design	\$ 11,330,000	\$ 11,330,000	\$ -
208	1	Open	Contra Costa County Real Property	Acquisition Services	\$ 2,853,000	\$ 2,853,000	\$ -
211	-	Open	Harris & Associates	Corridor Integration Team	\$ 2,005,000	\$ 1,905,000	\$ 100,000
219	-	Open	PB Americas	Construction Management	\$ 104,000	\$ 94,000	\$ 10,000
249	-	Open	Economic and Planning Systems	Transportation Regional Fee Study	\$ 44,500	\$ 39,935	\$ 4,565

**CALDECOTT TUNNEL FOURTH BORE
PROJECT NO. 1698/1001**

I. Project Schedule

Current Project Phase: On July 31, 2008 a set of final plans were submitted to Caltrans Headquarters for final review and project advertisement in February 2009. Right of way (ROW) acquisition is nearing completion and ROW certification is expected in December 2008.

Phase Name	2004	2005	2006	2007	2008	2009	2010	2011	2012	2013	2014
Project Approval/ Environmental Document	Completed										
Final Design			Completed			In Progress					
Right of Way & Utilities			Completed		In Progress						
Construction						In Progress					

Completed
 In Progress

II. Current Funding Plan (\$ in Millions)

Changes from Last Quarterly Report: Changes are highlighted in the table below. The total project cost remains the same. However, as a result of recently encountered out of scope items, the costs for final design and ROW engineering have increased by \$4.5 M. The ROW engineering budget has increased from \$200,000 to \$300,000 and has been moved from the design phase to the right of way and utilities phase. The design cost has increased from \$28.7 M to \$33.1 M. Budget for these increases have been taken from the risk contingency being held in the construction phase. Shifts among various funding sources were necessary to accomodate these changes.

Changes shown in the PA/ED phase reflect actual expenditures against the respective fund sources.

Fund Source	Project Approval/ Environmental Document	Design	Right of Way & Utilities	Construction	Construction Management & Engineering	Total	Note
Measure J		0.4		121.5	1.1	123.0	
Federal Earmark				1.0		1.0	
STIP-RIP		2.0		31.0		33.0	
STIP-IIP	9.0	5.2	1.1		2.7	18.0	
TCRP	10.0	10.0				20.0	
RM2	1.5	15.5		32.0	1.0	50.0	
CMIA				157.4	17.6	175.0	
Total Project Cost	20.5	33.1	1.1	342.9	22.4	\$420.0	¹

Legend:

- STIP – RIP: State Transportation Improvement Program/Regional Improvement Program
- STIP – IIP: State Transportation Improvement Program/Inter-regional Improvement Program
- TCRP: Traffic Congestion Relief Program
- CMIA: Corridor Mobility Improvement Account
- RM2: Regional Measure 2

Fund Plan Notes:

1. Based on the latest 80th percentile risk-based project cost estimate for the 2-lane alternative.

III. Status of Major Consultant/Agency Contracts

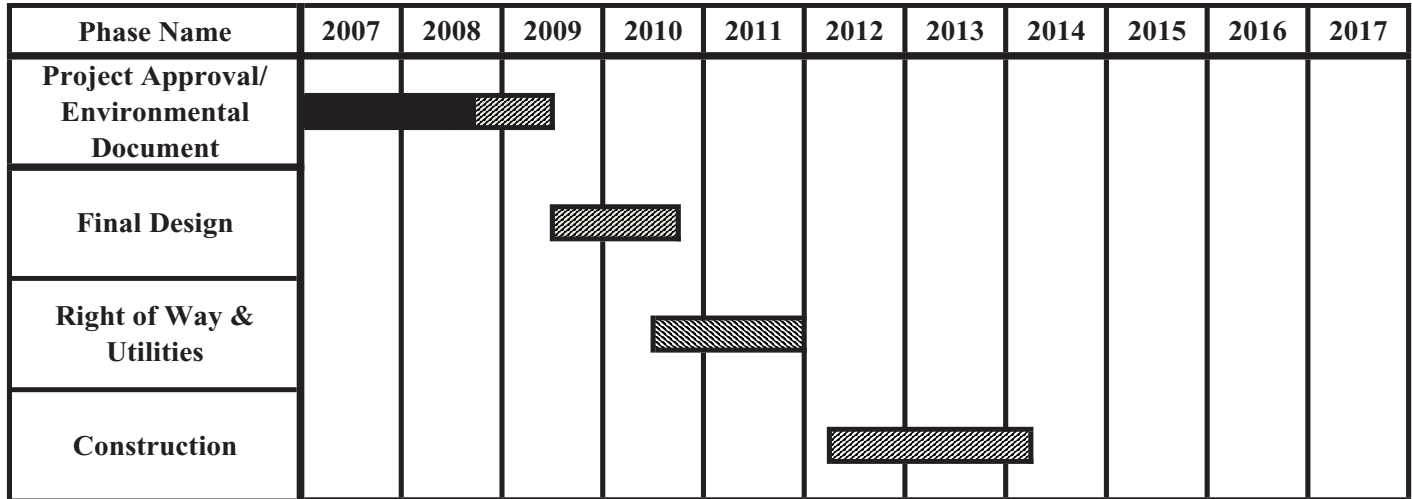
Changes from Last Quarterly Report: On August 28, 2008 two modifications to Task Orders were issued increasing the current authorized amount by \$545,000 in order to encumber newly identified tasks/costs. This is a task order based contract, therefore, the Contract Not To Exceed Amount remains the same. Amendment No. 5 to Contract 175 for a \$1 M budget increase will be discussed at the October 2008 Authority meeting and is not included in the table below.

Contract No.	Amend No.	Open/Closed	Agency/Consultant	Description	Current Contract Not To Exceed Amount	Current Authorized Amount	Remaining Contingency or Uncommitted Work Order Funds
175	4	Open	Parsons	Project Approval/ Environmental Document - Final Design	\$ 24,425,000	\$ 24,425,000	\$ -

**I-80/SAN PABLO DAM ROAD INTERCHANGE IMPROVEMENTS
PROJECT NO. 7002**

I. Project Schedule

Current Project Phase: The Project Approval/Environmental Document (PA/ED) phase is progressing. Draft Environmental Document is expected to be released in early 2009.



Completed
 In Progress

II. Current Funding Plan (\$ in Millions)

Changes from Last Quarterly Report: None.

Fund Source	Project Approval/ Environmental Document	Design	Right of Way & Utilities	Construction	Construction Management & Engineering	Total	Note
Measure J	2.0	4.4	6.2			12.6	
West County Mitigation Fees			7.1			7.1	
Local City	0.2	2.8				3.0	
STIP-RIP			5.0			5.0	¹
TBD				61.4	9.0	70.4	
Total Project Cost:	2.2	7.2	18.3	61.4	9.0	\$98.1	

Legend:

STIP – RIP: State Transportation Improvement Program/Regional Improvement Program

Fund Plan Notes:

- In June 2008, the Authority agreed to pre-commit \$5 M in 2010 STIP for the project in return for using \$5 M in Measure J funds for the I-80 Integrated Corridor Mobility Project.

III. Status of Major Consultant/Agency Contracts

Changes from Last Quarterly Report: None.

Contract No.	Amend No.	Open/ Closed	Agency/Consultant	Description	Current Contract Not To Exceed Amount	Current Authorized Amount	Remaining Contingency or Uncommitted Work Order Funds
212	1	Open	URS Greiner	Project Approval/ Environmental Document	\$ 2,163,030	\$ 2,047,518	\$ 115,512

**I-80/CENTRAL AVENUE INTERCHANGE IMPROVEMENTS
PROJECT NO. 7003**

I. Project Schedule

Current Project Phase: The project is in the PSR/Feasibility Study Phase, which should be completed by the end of 2008. The schedule for future phases will be determined based on the results of this phase.

II. Current Funding Plan (\$ in Millions)

Changes from Last Quarterly Report: None.

The project has a Federal Earmark for \$2.55 M, as well as \$17.8 M in Measure J funding. The project is currently being evaluated to determine a feasible alternative. Project cost estimates will be developed when such an alternative has been identified.

III. Status of Major Consultant/Agency Contracts

Changes from Last Quarterly Report: \$144,920 in contingency funds have been authorized to allow the consultant to continue preparation of the Feasibility Study. The Contract Not to Exceed Amount remains the same.

Contract No.	Amend No.	Open/Closed	Agency/Consultant	Description	Current Contract Not To Exceed Amount	Current Authorized Amount	Remaining Contingency or Uncommitted Work Order Funds
214	1	Open	PB Americas	Feasibility Study/ Project Approval/ Environmental Document	\$ 1,571,815	\$ 579,669	\$ 992,146

**I-680/NORRIS CANYON BUS/CARPOOL ON- AND OFF-RAMPS
PROJECT NO. 8003**

I. Project Schedule

Current Project Phase: A Project Study Report (PSR) is currently being prepared for this project. It is anticipated to be completed in August 2009. A proposed project delivery schedule will be prepared as part of the study process.

II. Current Funding Plan (\$ in Millions)

Changes from Last Quarterly Report: None.

\$32.7 M in Measure J funds is programmed for this project. The total project cost estimate will be developed as part of the Project Study Report effort.

III. Status of Major Consultant/Agency Contracts

Changes from Last Quarterly Report: None.

Contract No.	Amend No.	Open/ Closed	Agency/Consultant	Description	Current Contract Not To Exceed Amount	Current Authorized Amount	Remaining Contingency or Uncommitted Work Order Funds
213	-	Open	CH2M Hill	Project Study Report	\$ 442,000	\$ 407,344	\$ 34,656