

---

## Contra Costa Transportation Authority Meeting **STAFF REPORT**

Meeting Date: July 20, 2011

<b>Subject</b>	<b>Quarterly Project Funding Plans – Major State Highway Projects.</b>
<b>Summary of Issues</b>	The quarterly report on the status of ongoing consultant project-related contracts as well as on key project funding issues is attached.
<b>Recommendations</b>	Report is provided as information only.
<b>Financial Implications</b>	None.
<b>Options</b>	
<b>Attachments</b>	<b>A.</b> Quarterly Project Funding Plans
<b>Changes from Committee</b>	

### Background

*This Page Intentionally Blank*

**QUARTERLY PROJECT FUNDING PLANS/  
MAJOR STATE HIGHWAY PROJECTS**

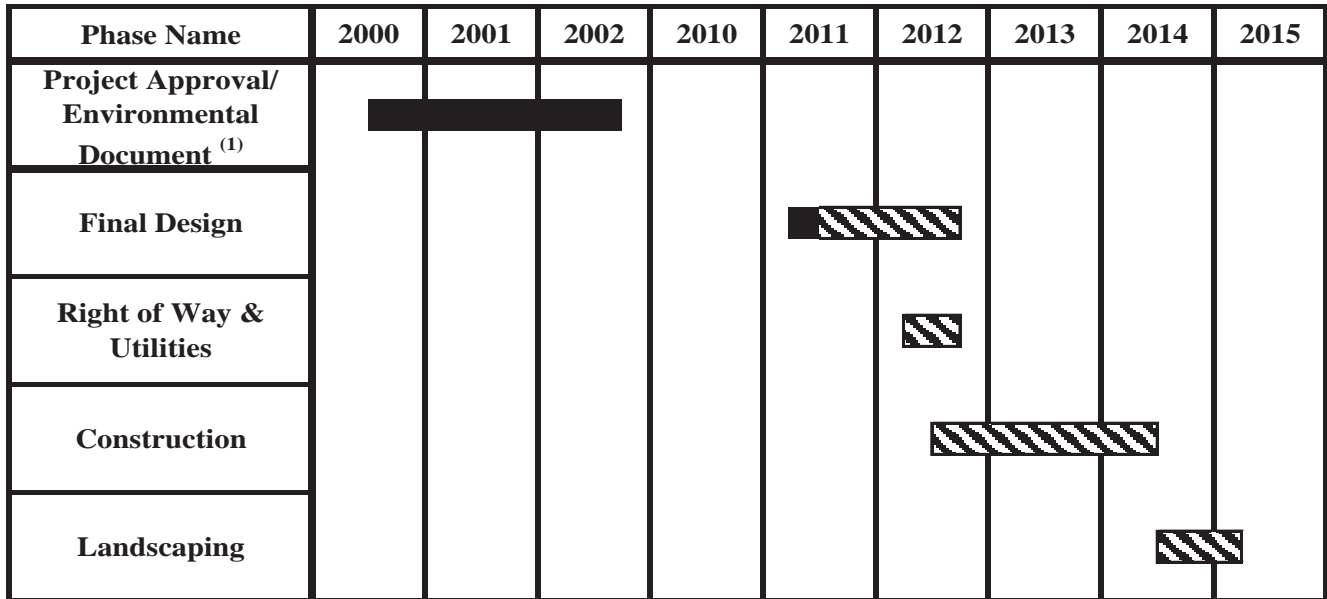
July 7, 2011

- ▶ 1106S2: I-680 Auxiliary Lanes Project - Segment 2
- ▶ 1406/3003: SR 4 (E) Widening: Loveridge Road to Somersville Road
- ▶ 1407/3001: SR 4 (E) Widening: Somersville Road to SR 160
- ▶ 1698/1001: Caldecott Fourth Bore Project
- ▶ 7002: I-80/San Pablo Dam Road Interchange Improvements
- ▶ 7003: I-80/Central Avenue Interchange Improvements
- ▶ 8003: I-680/Norris Canyon Bus/Carpool On and Off-Ramps

**I-680 AUXILIARY LANES PROJECT - Segment 2  
PROJECT NO. 1106S2**

**I. Project Schedule**

Current Project Phase: Plans, Specifications and Estimate (PS&E).



■ Completed      ▨ Forecasted

(1) Environmental Document was completed in 2002, and included Segments 1, 2 and 3

**II. Current Funding Plan (\$ in Millions) - Segment 2**

Changes from Last Quarterly Report: None.

Fund Source	Project Approval/ Environmental Document	Design	Right of Way & Utilities	Construction	Construction Management & Engineering	Total	Note
Measure C	0	0.6	0.05	12.25	3.7	16.6	
TVTDF	0.04	3.4	0	0	0	3.4	
Other	0	0.00	0	14	0	14.0	
<b>Total Project Cost</b>	<b>0.04</b>	<b>4.0</b>	<b>0.05</b>	<b>26.25</b>	<b>3.7</b>	<b>\$34.0</b>	

Legend:

TVTDF: Tri-Valley Transportation Development Fee

**III. Status of Major Consultant/Agency Contracts**

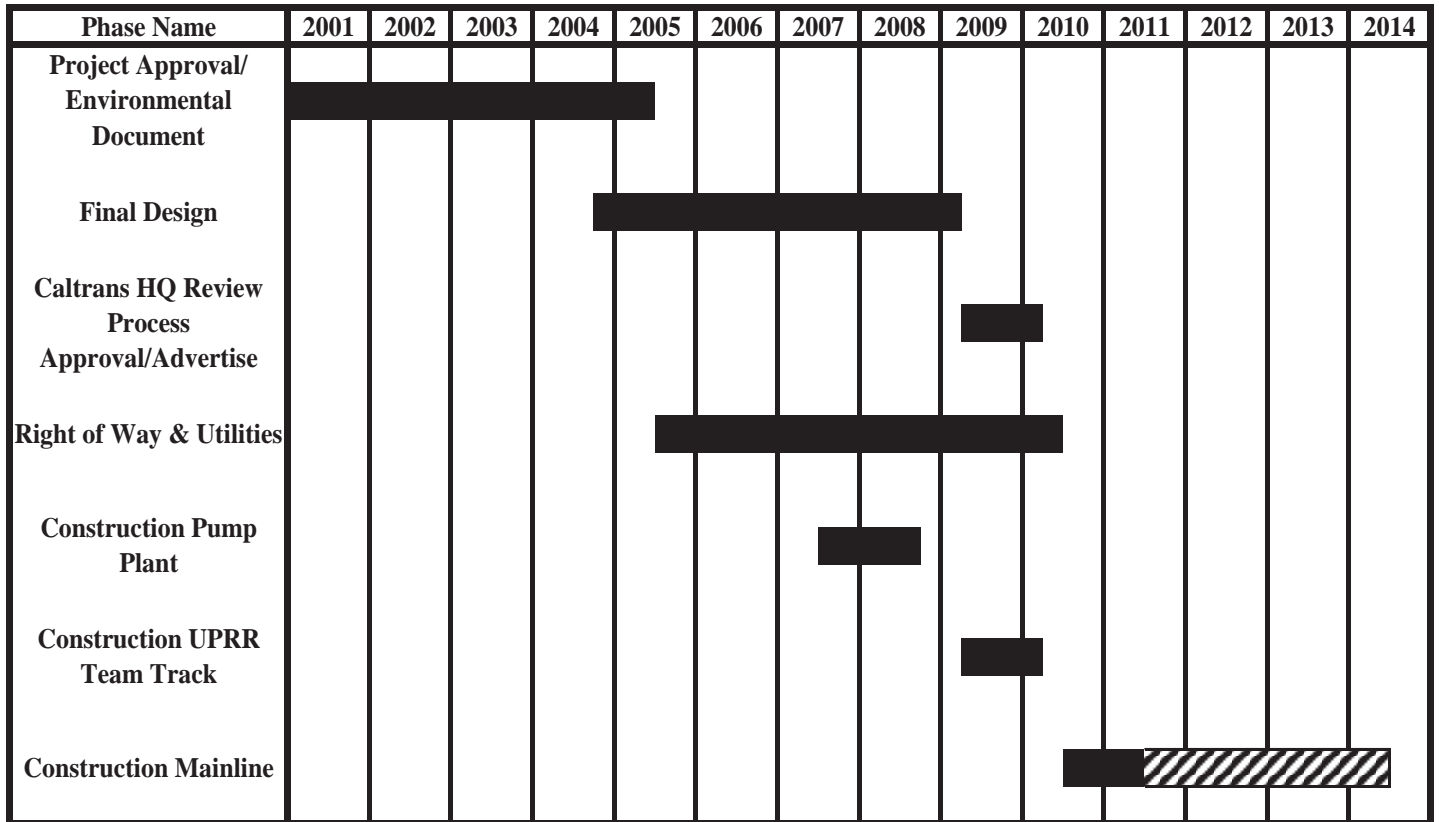
Changes from Last Quarterly Report: New Contract 317 with Mark Thomas & Company was approved by the Authority on April 20, 2011.

Contract No.	Amend No.	Open/ Closed	Agency/Consultant	Description	Current Contract Not To Exceed Amount	Current Authorized Amount	Contingency or Uncommitted Work Order Funds
317	-	Open	Mark Thomas & Company	Design Services for I-680 Auxiliary Lane - Segment 2	\$ 3,705,000	\$ 3,480,000	\$ 225,000

**SR 4 (E) WIDENING: LOVERIDGE ROAD TO SOMERSVILLE ROAD  
PROJECT NO. 1406/3003**

**I. Project Schedule**

Current Project Phase: SR4 mainline and interchange construction.



 Completed
  Forecasted

**II. Current Funding Plan (\$ in Millions)**

Changes from Last Quarterly Report: None.

Fund Source	Project Approval/ Environmental Document <sup>2</sup>	Design	Right of Way & Utilities	Construction <sup>1</sup>	Construction Management & Engineering	Total	Note
Measure C	4.2	8.4	16.8	7.9	6.7	44.0	
Measure J				24.8	3.1	27.9	
Federal Earmark			0.7	30.2		30.9	
STIP-RIP			8.0			8.0	
STIP-IIP			3.0			3.0	
TCRP			9.4	0.2	4.4	14.0	
BART (RM1/RM2)		2.9		13.5	1.8	18.2	
<b>Sub-Total SR4 Loveridge Interchange:</b>						<b>146.0</b>	
BART RM2				6.7	1.0	7.7	<sup>3</sup>
<b>Sub-Total eBART Median Structures:</b>						<b>7.7</b>	
<b>Total Project Cost</b>	<b>4.2</b>	<b>11.3</b>	<b>37.9</b>	<b>83.3</b>	<b>17.0</b>	<b>\$153.7</b>	<b>1, 2, 4</b>

**Legend:**

STIP – RIP: State Transportation Improvement Program/Regional Improvement Program  
 STIP – IIP: State Transportation Improvement Program/Inter-regional Improvement Program  
 TCRP: Traffic Congestion Relief Program  
 RM1/RM2: Regional Measure 1 and 2 and BART

**Fund Plan Notes:**

1. The estimated cost reflects the contractor’s bid and includes contingency for construction and early contracts for construction of the pump plant and team track.
2. The Project Approval/Environmental Document (PA/ED) covers the entire SR 4 (e) corridor from Loveridge Road to SR-160 (projects 1406 and 1407).
3. RM 2 funds to be funded by BART for median structures and other BART features.
4. Cost for entire project including the pump plant relocation, BART structures and team track.

**III. Status of Major Consultant/Agency Contracts**

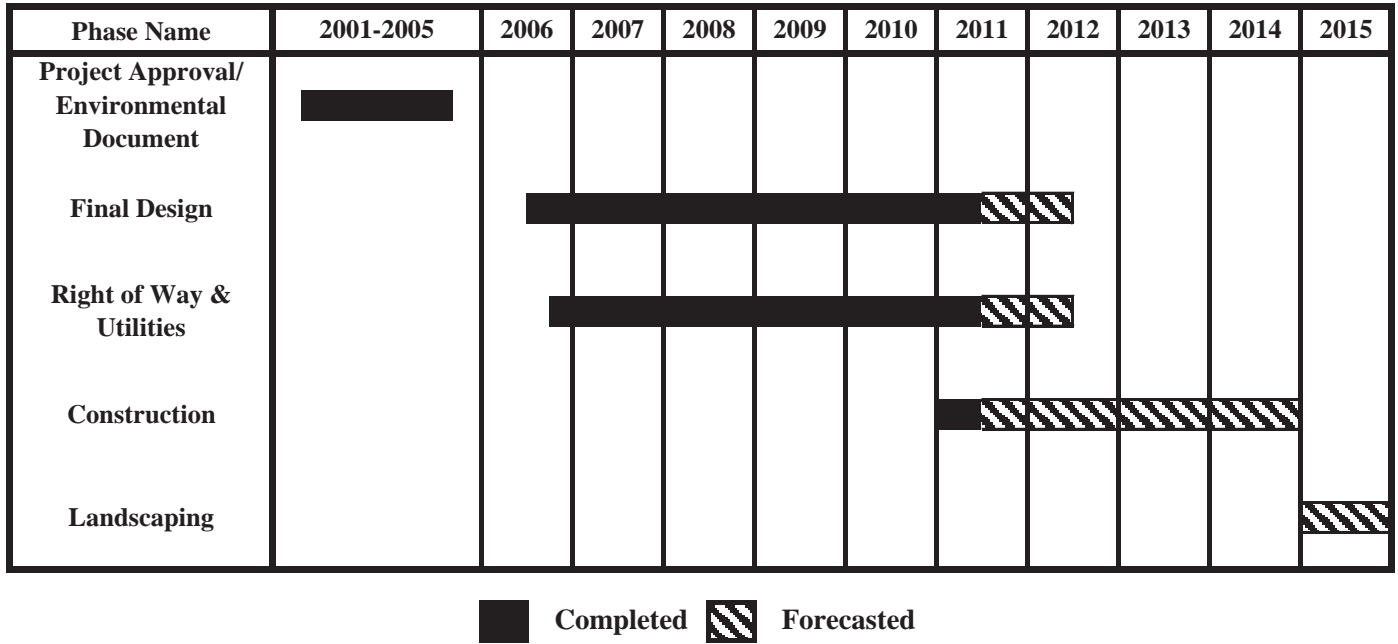
Changes from Last Quarterly Report: Amendment 6 to Contract No. 181 with the County was executed to extend the term of the contract to December 31, 2015.

Contract No.	Amend No.	Open/ Closed	Agency/Consultant	Description	Current Contract Not To Exceed Amount	Current Authorized Amount	Remaining Contingency or Uncommitted Work Order Funds
136	9	Open	Parsons	Project Approval/ Environmental Document	\$ 4,000,161	\$ 3,980,161	\$ 20,000
179	4	Open	URS	Final Design	\$ 9,103,178	\$ 9,103,178	\$ -
181	6	Open	Contra Costa County	Right of Way Acquisition Services	\$ 415,000	\$ 415,000	\$ -
197	6	Open	PB Americas	Construction Management	\$ 9,869,084	\$ 9,719,084	\$ 150,000
206	8	Closed	TranSystems	Design - Team Track Facility	\$ 190,000	\$ 190,000	\$ -
234	2	Open	URS	Design Support During Construction	\$ 755,000	\$ 680,000	\$ 75,000

**SR 4 (E) WIDENING: SOMERSVILLE ROAD TO SR 160  
PROJECT NO. 1407/3001**

**I. Project Schedule**

Current Project Phase: Final design and right of way acquisition.



**II. Current Funding Plan (\$ in Millions)**

Changes from Last Quarterly Report: Changes to the funding plan are shown shaded in the table below. CMIA funds were decreased by \$4.272 M, the amount de-allocated by the CTC as a result of the bids coming in lower than the Engineer’s estimate on the Segment 1 project. BART (Structures) funding was increased to account for additional eBART items to be constructed with the freeway project.

Fund Source	Project Approval/ Environmental Document <sup>1</sup>	Design <sup>3</sup>	Right of Way & Utilities	Construction	Construction Management & Engineering	Total	Note
Measure C		10.8	1.6			12.4	
Measure J	0.3	21.3	13.6	44.5	30.3	110.0	<sup>3</sup>
CMIA				60.7	20.0	80.7	<sup>4</sup>
STIP-RIP			10.0	47.5	2.0	59.5	<sup>4, 5</sup>
STIP (City)				4.4		4.4	<sup>5</sup>
Federal Earmark				1.6		1.6	
SLPP				15.0		15.0	<sup>3</sup>
ECCRFFA				30.0		30.0	
BART (RM1/RM2)			27.3	62.7		90.0	
City				1.8		1.8	<sup>6</sup>
<b>Sub-Total SR 4 Widening:</b>						<b>\$405.4</b>	
BART RM2		1.5		25.2	3.2	29.9	<sup>2</sup>
<b>Sub-Total eBART Median Structure:</b>						<b>\$29.9</b>	
<b>Total Project Funding</b>	<b>0.3</b>	<b>33.6</b>	<b>52.5</b>	<b>293.4</b>	<b>55.5</b>	<b>\$435.3</b>	<sup>7</sup>

**Legend:**

- CMIA: Corridor Mobility Improvement Account
- STIP – RIP: State Transportation Improvement Program/Regional Improvement Program
- ECCRFFA: East Contra Costa Regional Fee and Financing Authority
- RM1/RM2: Regional Measure 1 and 2
- SLPP: State-Local Partnership Funds Program

**Fund Plan Notes:**

1. Funding for Project PA/ED is included in the SR 4 Loveridge to Somersville Project Funding Plan (Project 1406). The PA/ED covers the entire SR 4 (e) corridor from Loveridge Road to SR 160 (projects 1406 and 1407). \$300,000 has been included to cover the cost for required environmental mitigation measures.
2. At the request of BART, funding has been added to the project to cover final design and construction of eBART features in the median of SR 4.
3. Measure J funds were adjusted to account for the \$15M in State-Local Partnership Funds (SLPP) shown available for this project. Revised Measure J funding amount takes into account adopted CCTA SLPP policy to offset an equivalent amount of Measure J revenue and benefit all Measure J project categories.
4. STIP funds were decreased by \$14.148 M and CMIA funds were decreased by \$4.272 M, the amounts, the amounts de-allocated by the CTC when the bids came in lower than the Engineer's Estimate on Segment 1: Somersville Interchange project.
5. STIP funds shown include \$19.45 M (which includes \$4.45 M for the Hillcrest Interchange) that the Authority staff is still working with the CTC to include in the project.
6. The City is contributing \$1.3 M from their Hillcrest Avenue Overcrossing Bridge District Fund for relocation of westbound on and off ramps at Hillcrest Avenue. The City's contribution was increased by \$500,000 to fund a City sanitary sewer line betterment in the Segment 2, Contra Loma/G Street project.
7. Construction cost for the project segments are currently anticipated to be lower than previously estimated which would reduce the total project funding shown above. However, lower cost is predicated on maintaining schedule and obtaining favorable bids reflective to the current bidding climate. Furthermore, it is still unknown whether all of the STATE and ECCRFFA funding committed to the project will be available in time to advertise the projects per schedule.

**III. Status of Major Consultant/Agency Contracts**

Changes from Last Quarterly Report: Amendment 3 to Contract No. 271 with Jacobs was executed to extend the term of the contract to June 30, 2012.

Contract No.	Amend No.	Open/Closed	Agency/Consultant	Description	Current Contract Not To Exceed Amount	Current Authorized Amount	Remaining Contingency or Uncommitted Work Order Funds
183	-	Closed	Mark Thomas & Co.	Strategic Planning Study	\$ 78,432	\$ 78,432	\$ -
202	4	Open	Mark Thomas & Co.	Final Design	\$ 6,461,000	\$ 6,461,000	\$ -
203	5	Open	BFK Engineers	Final Design	\$ 7,186,000	\$ 7,186,000	\$ -
204	5	Open	TY Lin International	Final Design	\$ 14,240,941	\$ 14,240,941	\$ -
208	3	Open	Contra Costa County Real Property	Acquisition Services	\$ 5,458,000	\$ 5,458,000	\$ -
211	3	Open	Harris & Associates	Corridor Integration Team	\$ 3,000,335	\$ 3,000,335	\$ -
219	1	Open	PB Americas	Construction Management	\$ 104,000	\$ 94,000	\$ 10,000
270	2	Open	Vali Cooper & Associates	Construction Management	\$ 3,955,712	\$ 3,855,712	\$ 100,000
271	3	Open	Jacobs Civil, Inc.	Construction Management	\$ 85,000	\$ 80,000	\$ 5,000
305	-	Open	Mark Thomas & Co.	Construction Management	\$ 625,000	\$ 625,000	\$ -
256, 263, 264, 266, 267, 268, 276, 277, 280, 281, 282, 287, 292, 293, 294, 295, 301, 302, 303, 306, 309, 313, 314	-	Open	PG&E	Utility Relocation	\$ 13,351,094	\$ 13,351,094	\$ -

**CALDECOTT FOURTH BORE PROJECT  
PROJECT NO. 1698/1001**

**I. Project Schedule**

Current Project Phase: Tunneling construction of fourth bore.

Phase Name	2004	2005	2006	2007	2008	2009	2010	2011	2012	2013	2014
Project Approval/ Environmental Document	Completed										
Final Design			Completed								
Right of Way & Utilities			Completed								
Construction							Forecasted				

 Completed
  Forecasted

**II. Current Funding Plan (\$ in Millions)**

Changes from Last Quarterly Report: None.

Fund Source	Project Approval/ Environmental Document	Design	Right of Way & Utilities	Construction	Construction Management & Engineering	Total	Note
Measure J		0.4		100.4	21.7	122.5	<sup>1</sup>
Federal Earmark				1.4		1.4	
STIP-RIP		2.0				2.0	
STIP-IIP	9.0	5.2	1.1			15.3	
TCRP	10.0	10.0				20.0	
RM2	1.5	15.9		32.6		50.0	
ARRA (State)				73.4	4.3	77.7	
ARRA (Regional)				84.3	17.6	101.9	
<b>Total Project Cost</b>	<b>20.5</b>	<b>33.5</b>	<b>1.1</b>	<b>292.1</b>	<b>43.6</b>	<b>390.8</b>	

**Legend:**

STIP – RIP: State Transportation Improvement Program/Regional Improvement Program  
 STIP – IIP: State Transportation Improvement Program/Inter-regional Improvement Program  
 TCRP: Traffic Congestion Relief Program  
 RM2: Regional Measure 2  
 ARRA: American Reinvestment and Recovery Act

**Fund Plan Notes:**

1. Measure J total shown does not include \$2M swap that will be provided for City of Oakland enhancement projects. An additional \$2M swap may be required due to lack of State Funds for the City enhancements.

**III. Status of Major Consultant/Agency Contracts**

Changes from Last Quarterly Report: None.

Contract No.	Amend No.	Open/Closed	Agency/Consultant	Description	Current Contract Not To Exceed Amount	Current Authorized Amount	Remaining Contingency or Uncommitted Work Order Funds
175	5	Closed	Parsons	Project Approval/ Environmental Document - Final Design	\$ 25,424,921	\$ 25,424,921	\$ -
261	1	Open	Parsons	On-Call Design Support Services During Construction	\$ 4,844,000	\$ 3,500,000	\$ 1,344,000
262	1	Open	PB Americas, Inc	Construction Management Services During Construction	\$ 15,174,467	\$ 14,030,059	\$ 1,144,408

**I-80/SAN PABLO DAM ROAD INTERCHANGE IMPROVEMENTS  
PROJECT NO. 7002**

**I. Project Schedule**

Current Project Phase: Final Design. Project Approval/Environmental Document (PA/ED) - Completed on May 24, 2010.

Phase Name	2007	2008	2009	2010	2011	2012	2013	2014	2015	2016	2017	
Project Approval/ Environmental Document												
Final Design												
Right of Way & Utilities												
Construction												

Completed
  Forecasted

**II. Current Funding Plan (\$ in Millions)**

Changes from Last Quarterly Report: None.

Fund Source	Project Approval/ Environmental Document	Design	Right of Way & Utilities	Construction	Construction Management & Engineering	Total	Note
Measure J	2.4	3.9	0.7			7.0	
West County Mitigation Fees				7.1		7.1	
Local City		3.0				3.0	
STIP-RIP				5.0		5.0	<sup>1</sup>
TBD		1.6	21.0	59.9	8.6	91.1	
<b>Total Project Cost:</b>	<b>2.4</b>	<b>8.5</b>	<b>21.7</b>	<b>72.0</b>	<b>8.6</b>	<b>\$113.2</b>	<sup>2</sup>

**Legend:**

STIP – RIP: State Transportation Improvement Program/Regional Improvement Program

**Fund Plan Notes:**

1. In June 2008, the Authority agreed to pre-commit \$5 M in 2010 STIP for the project in return for using \$5 M in Measure J funds for the I-80 Integrated Corridor Mobility Project.
2. Cost shown is in escalated dollars.

**III. Status of Major Consultant/Agency Contracts**

Changes from Last Quarterly Report: New Contract 316 with URS to complete 35% design plans was approved by the Authority on May 18, 2011.

Contract No.	Amend No.	Open/ Closed	Agency/Consultant	Description	Current Contract Not To Exceed Amount	Current Authorized Amount	Remaining Contingency or Uncommitted Work Order Funds
212	3	Open	URS	Project Approval/ Environmental Document	\$ 2,298,664	\$ 2,271,781	\$ 26,883
316	-	Open	URS	35% Design	\$ 3,500,000	\$ 3,301,000	\$ 199,000

**I-80/CENTRAL AVENUE INTERCHANGE IMPROVEMENTS  
PROJECT NO. 7003**

**I. Project Schedule**

Current Project Phase: Environmental Clearance / Preliminary Engineering.

The PSR/Feasibility Study Report identified two projects to alleviate congestion on Central Avenue: The Operational Modification Project and the Local Roads Realignment project. The Operational Modification Project (i.e. restricting I-80 westbound on-ramp movement from Central Avenue on weekend peak congestion hours) was known as the Near-Term Project. This project could be added to the I-80/Integrated Corridor Management (ICM) Project for construction. However, a separate Environmental Document is being prepared. The Authority started the Project Development Team meetings with Caltrans for this effort. The Authority and Caltrans will be seeking FHWA's approval on the project. The Environmental process for the Local Road Improvement project is planned to start by the local jurisdictions in FY 2012 and construction is planned for 2014/15.

**II. Current Funding Plan (\$ in Millions)**

Changes from Last Quarterly Report: None.

The project has a \$2.55 M Federal Earmark, \$10.3 M in Measure J funding and \$7.1 M in Subregional Transportation Fees (WCCTAC). It currently appears that the Operational Modification Project will be designed and constructed as part of the I-8ICM Project. The estimated cost for the local road improvement project is \$17 M.

**III. Status of Major Consultant/Agency Contracts**

Changes from Last Quarterly Report: Authorized amount increased to environmentally clear the operational modification project.

Contract No.	Amend No.	Open/Closed	Agency/Consultant	Description	Current Contract Not To Exceed Amount	Current Authorized Amount	Remaining Contingency or Uncommitted Work Order Funds
214	2	Open	PB Americas	Feasibility Study/ Project Approval/ Environmental Document	\$ 1,571,815	\$ 913,091	\$ 658,724

**I-680/NORRIS CANYON BUS/CARPOOL ON- AND OFF-RAMPS  
PROJECT NO. 8003**

**I. Project Schedule**

Current Project Phase: Environmental Clearance / Preliminary Engineer. Project Study Report (PSR) - Completed (March 16, 2010).

**II. Current Funding Plan (\$ in Millions)**

Changes from Last Quarterly Report: None.

\$10.4 M in Measure J funds is currently programmed for this project in the 2011 Measure J Strategic Plan. The project estimated to cost \$102 million, of which \$91.6 million is currently unfunded.

**III. Status of Major Consultant/Agency Contracts**

Changes from Last Quarterly Report: New Contract No. 323 with CH2MHill to complete environmental clearance phase was approved by the Authority on June 15, 2011.

Contract No.	Amend No.	Open/Closed	Agency/Consultant	Description	Current Contract Not To Exceed Amount	Current Authorized Amount	Remaining Contingency or Uncommitted Work Order Funds
213	2	Closed	CH2M Hill	Project Study Report	\$ 537,000	\$ 537,000	\$ -
323	-	Open	CH2M Hill	Clearance / Preliminary Engineering	\$ 1,826,023	\$ 1,660,023	\$ 166,000

*This Page Intentionally Blank*