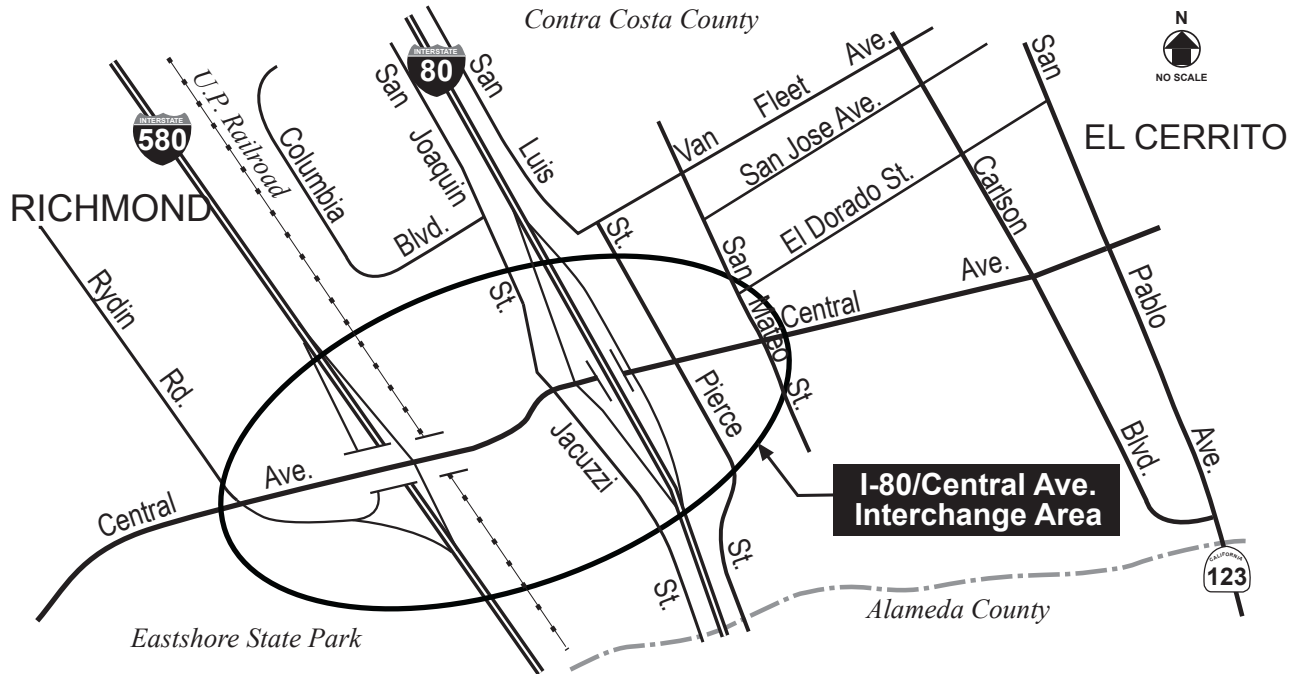




Interstate 80/ Central Avenue Interchange Improvements



Project Number

7003

Project Sponsor

Cities of El Cerrito and Richmond

Project Type

Transit

Highway

Local Streets

Major Arterial

Bike/Pedestrian

Other

Project Scope

Through the use of multiple extinguishable message signs, redirect I-80 westbound on-ramp traffic during weekend peak periods to I-580 (Operational Modifications project) and improve signalized intersections spacing along Central Avenue by connecting Pierce Street to San Mateo Street, converting Pierce Street access at Central Avenue to “right-in, right-out”, and relocating the traffic signal at Pierce Street/Central Avenue to the San Mateo Street/Central Avenue intersection (Local Roads Realignment project).

Funding Sources (\$ in million)

Total	20.0
Measure J Transportation Sales Tax ¹	10.3
Subregional Transportation Fees (WCCTAC)	7.1
Federal Earmark (SAFETEA-LU)	2.6

¹Measure J funds shown in escalated dollars. Actual commitment is in 2004 dollars as shown in Appendix A.

Interstate 80/ Central Avenue Interchange Improvements (cont.)

Need/Purpose

Central Avenue serves as the primary connection between the El Cerrito Plaza BART station and the I-80 and I-580 freeways. It also serves as an important east-west route between commercial areas and local neighborhoods. The four closely spaced signalized intersections along Central Avenue between Jacuzzi Street and Pierce Street lack sufficient storage capacity, resulting in poor intersection operations and heavy congestion during peak travel times, especially on weekends.

Project Location



Possible Segmentation

Improvements will be completed as two separate projects. The first project (Operational Modifications) is planned to be implemented together with the I-80 Integrated Corridor Mobility (ICM) Project (Measure J Project Number 7005), scheduled for construction in early 2012 (if schedule allows). The second project (Local Roads Realignment) is planned for construction in 2014/2015.

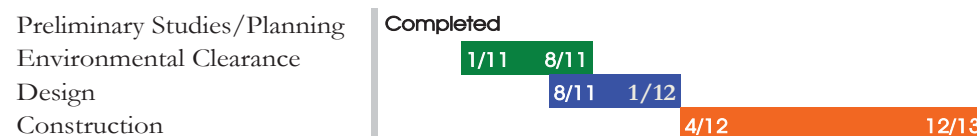
Issues

- The second project (local roads realignment) will have right-of-way impacts.

Current Status

The first project is under design. Environmental clearance and preliminary engineering for the second project has not yet begun.

Project Schedule



Note: Schedule reflects operational modification project only.